



PRITHVI PARADISE NXT

2 & 3 BHK *Next Gen Homes*

A PROJECT BY




A man with dark hair and a beard, wearing a dark blue pinstripe suit, white shirt, and dark tie, is seated in a modern, dark brown leather armchair. He is looking off to the side with a serious expression. His right hand is near his chest, and his left hand rests on his lap. He is wearing a watch on his left wrist and rings on both hands. His legs are crossed at the ankles. The background features a large, tufted sofa with a dark fur throw, a side table with a lamp, and a glass partition. The lighting is warm and dramatic, highlighting the man and the furniture.

*Embrace the Class of
Super Luxury*



Live High Live Big

Welcome to a new luxury phenomenon in Tathawade, transcending ordinary living and inviting you to revel in a contemplative space that celebrates life. Spread across 2 acres, these luxury residences will witness the confluence of residential and commercial spaces. Comprising three towers, they will be unified through a well-designed network of roads, open spaces, and infrastructure.



The Pinnacle Of Oppulence

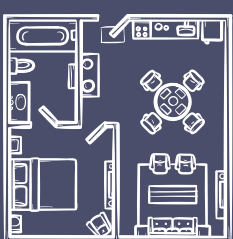
3 Towers 4 LEVEL Parking 2 FLOOR Club House

DRIVE FREE
Amenities zone

GRAND
Entrance



50+ Amenities



4 Flats Per
Floor



Semi Furnished
Flats



Separate Dinning
Space



Dual
Balconies



*Amenities Beyond Compare:
Indulge in Extravagance Every Day*



Open Amenities

- Cricket Turf
- Reading Area
- Barbeque Area
- Stargazing Point
- Open-Air Hangout Area
- Senior Citizen Sitout Area
- Acupressure Pathway
- Open Zumba
- Open Natural Gym
- Chit Chat Plaza
- Gazebo



Covered Amenities

- Guest Waiting Area
- Toddler's Play Area
- Music Room
- Co-Working Spaces
- Kids Zone
- Indoor Games
- Pool Table
- Chess Room
- Carrom Area
- Table Tennis
- Card Games
- Selfie Point
- Football Court





Ground Amenities

- Entrance Gate with Security Cabin
- CCTV on Campus
- DG Backup for Common Areas
- Rainwater Harvesting
- Automatic Elevator With DG Backup
- Club House
- Kitchen & Pantry Facility
- Letter Box
- Swimming Pool
- Separate Changing Room
- Open Children's Play Area
- Climbing Wall
- Multi-Purpose hall
- Herb Garden
- Festival Zone
- Party Lawn
- Grand Entrance Lobby with Security
- Wheelchair for Every Building
- Amphitheatre
- Community Hall
- Poolside Decks
- EV Charging Point
- Society Office
- Dropping Area

Master Layout



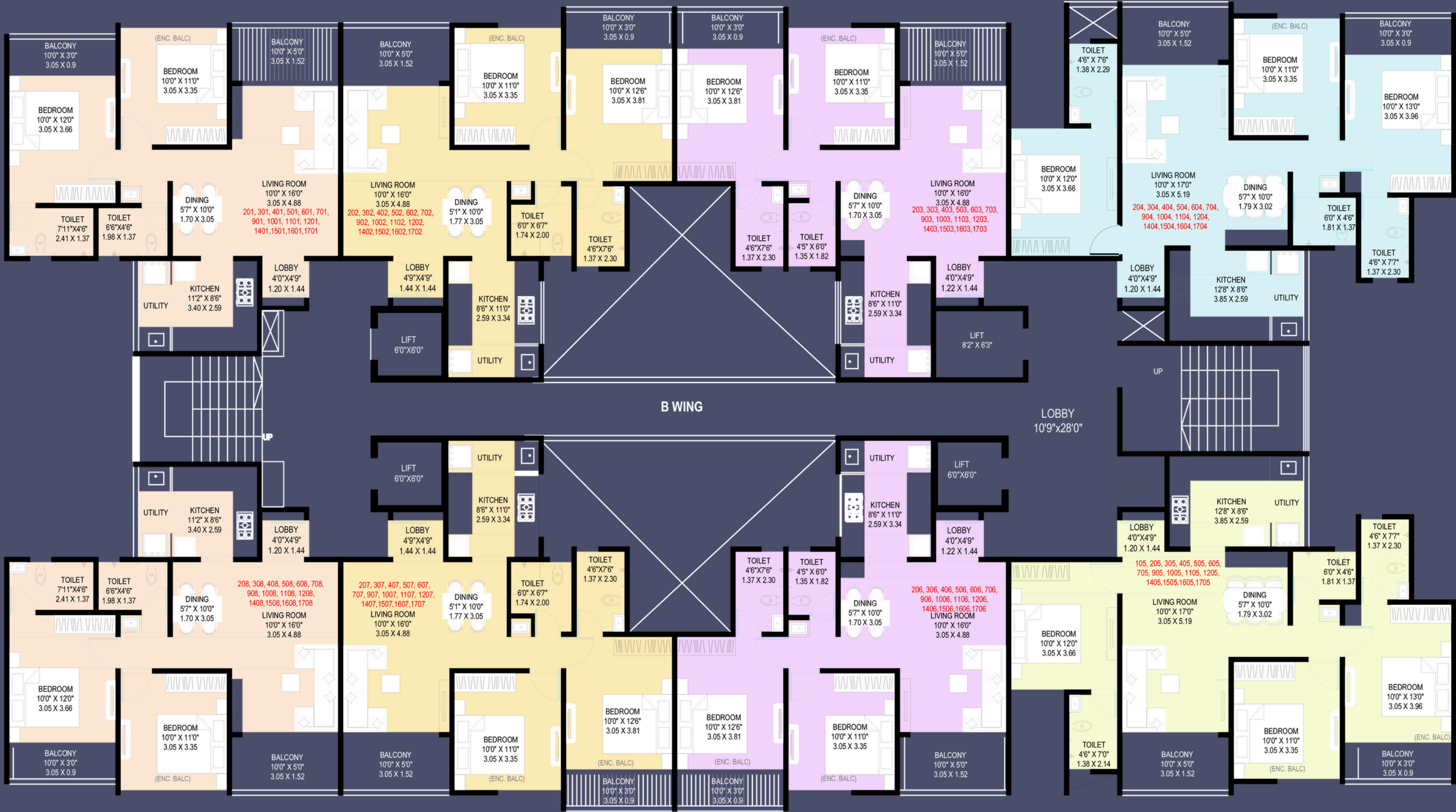
Typical Floor Plan

FLAT NO.S		
201, 301, 401, 501, 601, 701, 901, 1001, 1101, 1201, 1401,1501,1601,1701		
2 BHK	SQ.MT.	SQ.FT.
CARPET	61.54	662.42
E. BAL.	3.38	36.38
OPEN BAL	7.36	79.22
DRY BAL	0.00	0.00
TOTAL USEABLE	72.28	778.02

FLAT NO.S		
202, 302, 402, 502, 602, 702, 902, 1002, 1102, 1202, 1402,1502,1602,1702		
2 BHK	SQ.MT.	SQ.FT.
CARPET	61.41	661.02
E. BAL.	3.38	36.38
OPEN BAL	7.36	79.22
DRY BAL	0.00	0.00
TOTAL USEABLE	72.15	776.62

FLAT NO.S		
203, 303, 403, 503, 603, 703, 903, 1003, 1103, 1203, 1403,1503,1603,1703		
2 BHK	SQ.MT.	SQ.FT.
CARPET	60.95	656.07
E. BAL.	3.38	36.38
OPEN BAL	7.36	79.22
DRY BAL	0.00	0.00
TOTAL USEABLE	71.69	771.67

FLAT NO.S		
204, 304, 404, 504, 604, 704, 904, 1004, 1104, 1204, 1404,1504,1604,1704		
2 BHK	SQ.MT.	SQ.FT.
CARPET	76.04	818.49
E. BAL.	7.12	76.64
OPEN BAL	7.36	79.22
DRY BAL	0.00	0.00
TOTAL USEABLE	90.52	974.36



FLAT NO.S		
208, 308, 408, 508, 608, 708, 908, 1008, 1108, 1208, 1408,1508,1608,1708		
2 BHK	SQ.MT.	SQ.FT.
CARPET	61.54	662.42
E. BAL.	3.38	36.38
OPEN BAL	7.36	79.22
DRY BAL	0.00	0.00
TOTAL USEABLE	72.28	778.02

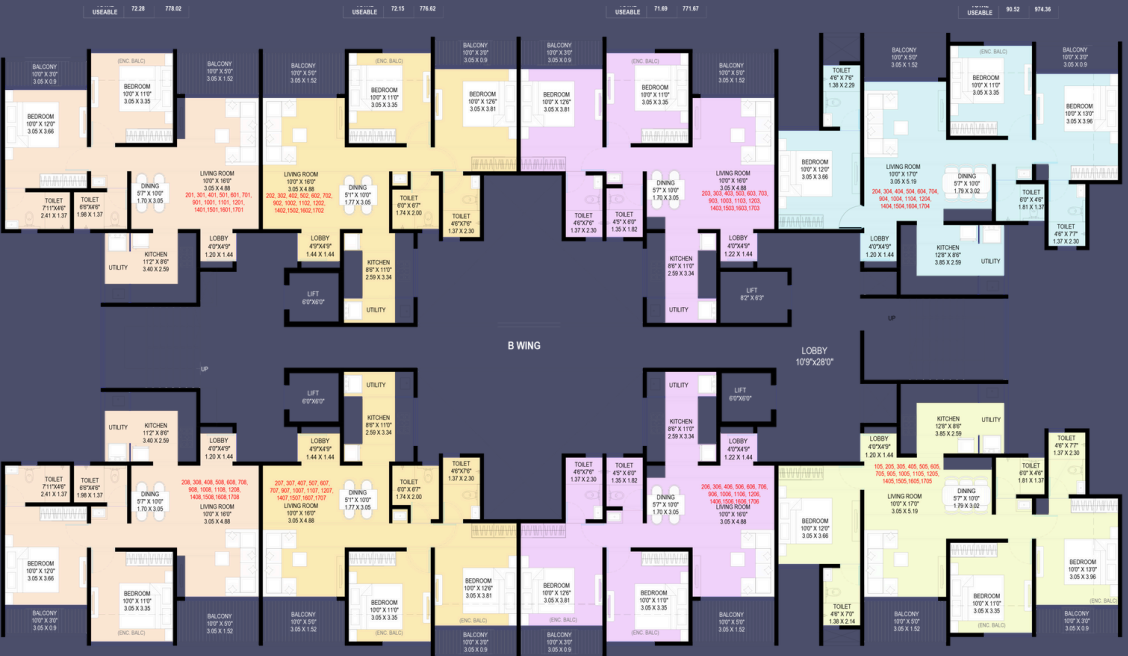
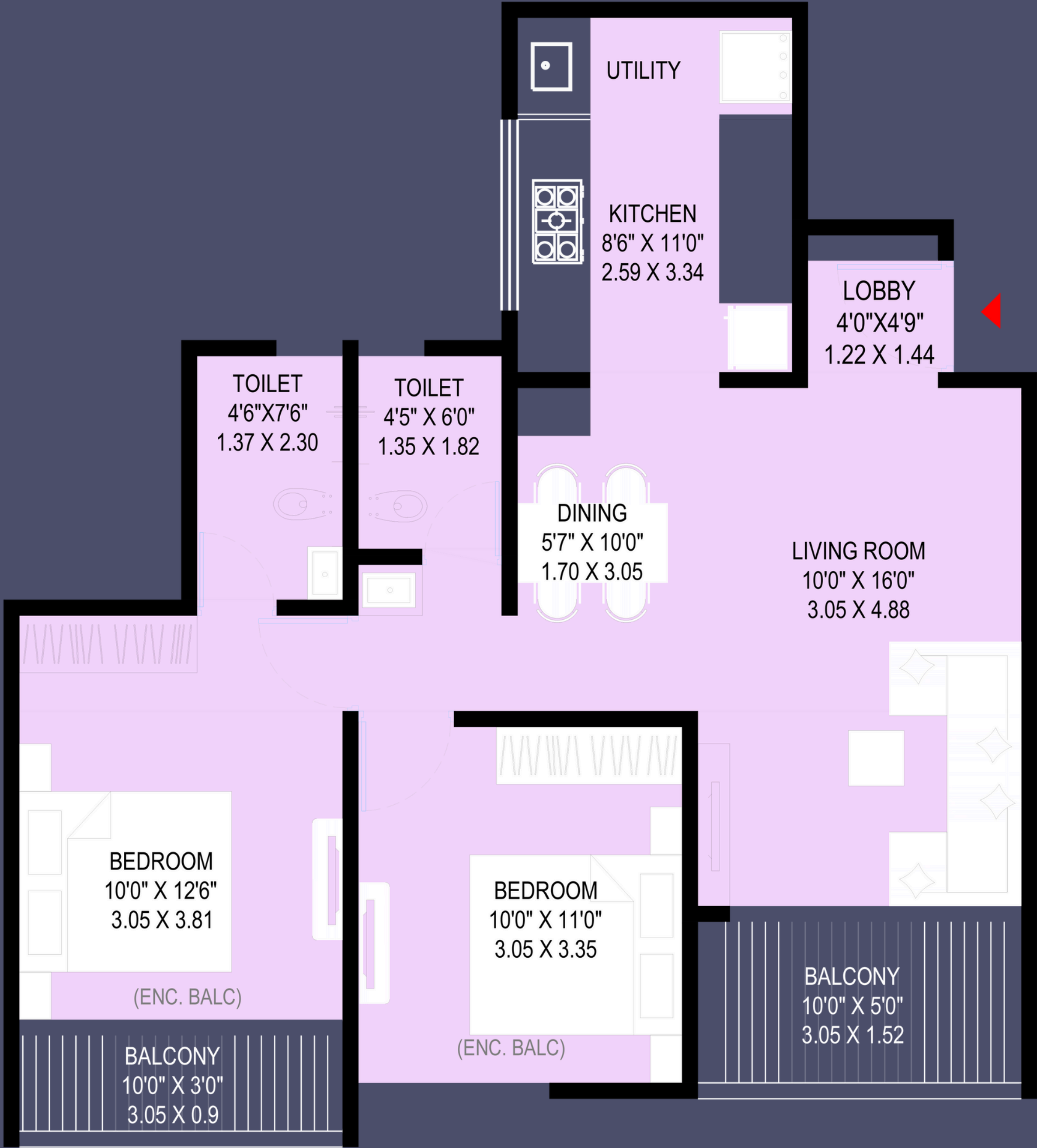
FLAT NO.S		
207, 307, 407, 507, 607, 707, 907, 1007, 1107, 1207, 1407,1507,1607,1707		
2 BHK	SQ.MT.	SQ.FT.
CARPET	58.52	661.91
E. BAL.	6.27	67.49
OPEN BAL	7.36	79.22
DRY BAL	0.00	0.00
TOTAL USEABLE	72.15	776.62

FLAT NO.S		
206, 306, 406, 506, 606, 706, 906, 1006, 1106, 1206, 1406,1506,1606,1706		
2 BHK	SQ.MT.	SQ.FT.
CARPET	58.05	624.85
E. BAL.	6.27	67.49
OPEN BAL	7.36	79.22
DRY BAL	0.00	0.00
TOTAL USEABLE	71.68	771.56

FLAT NO.S		
205, 305, 405, 505, 605, 705, 905, 1005, 1105, 1205, 1405,1505,1605,1705		
2 BHK	SQ.MT.	SQ.FT.
CARPET	75.00	807.30
E. BAL.	7.12	76.64
OPEN BAL	7.36	79.22
DRY BAL	0.00	0.00
TOTAL USEABLE	89.48	963.16



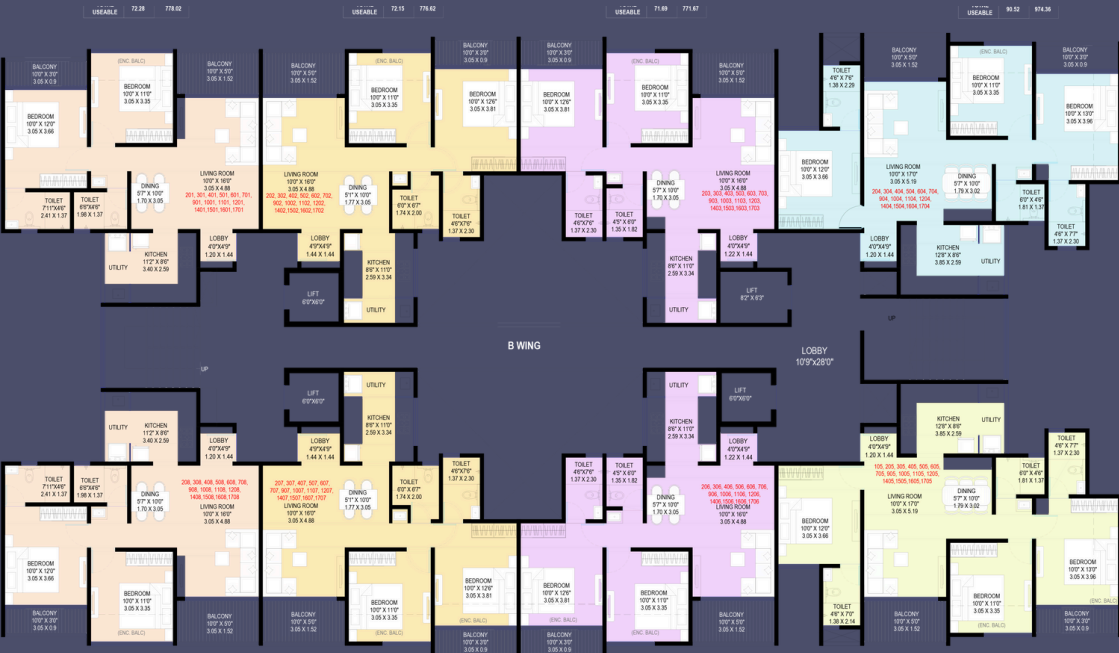
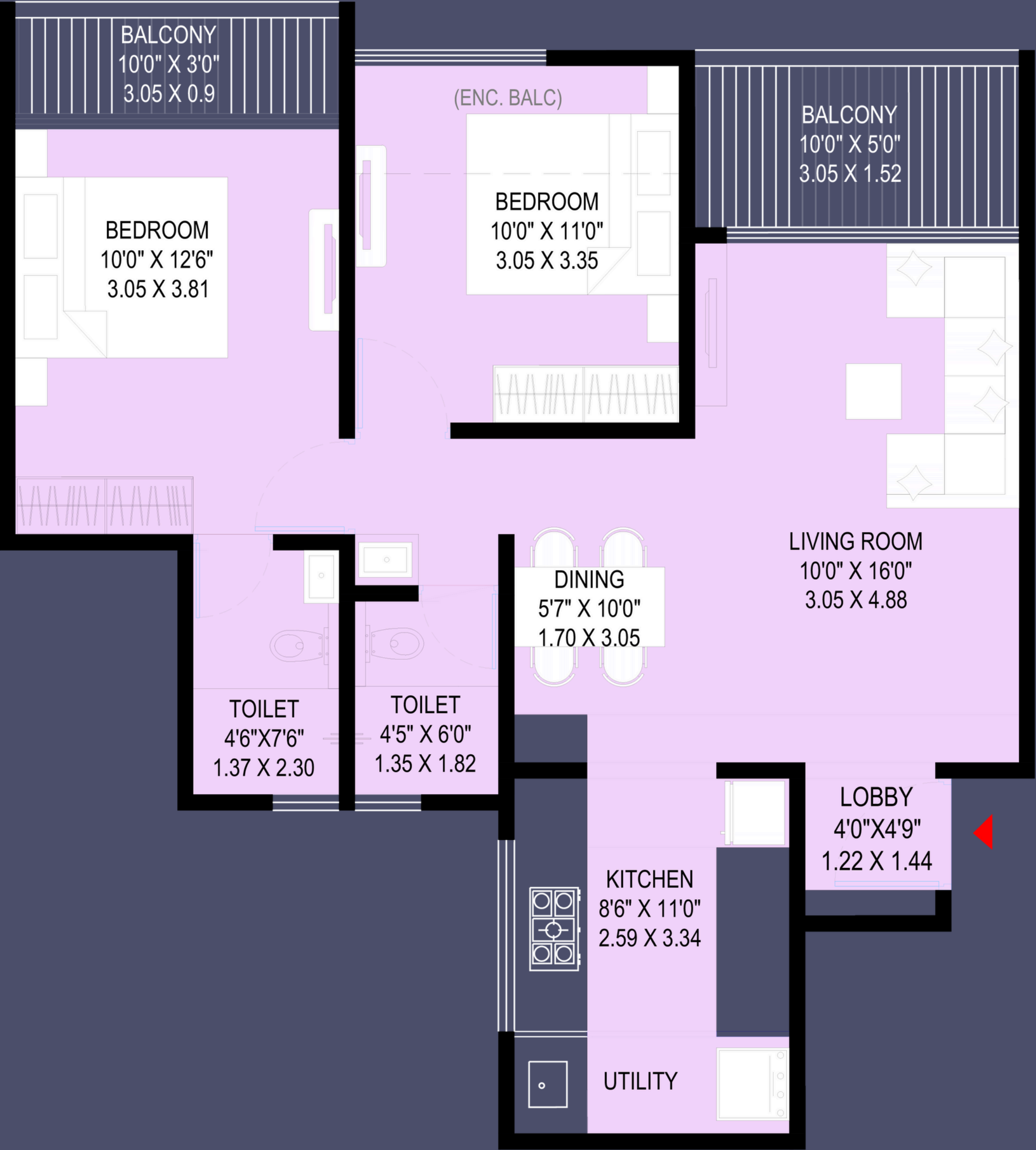
2 BHK Unit Plan



FLAT NO.S		
106, 206, 306, 406, 506, 606, 706, 906, 1006, 1106, 1206, 1406,1506,1606,1706		
2 BHK	SQ.MT.	SQ.FT.
CARPET	58.05	624.85
E. BAL.	6.27	67.49
OPEN BAL	7.36	79.22
DRY BAL	0.00	0.00
TOTAL USEABLE	71.68	771.56



2 BHK Unit Plan

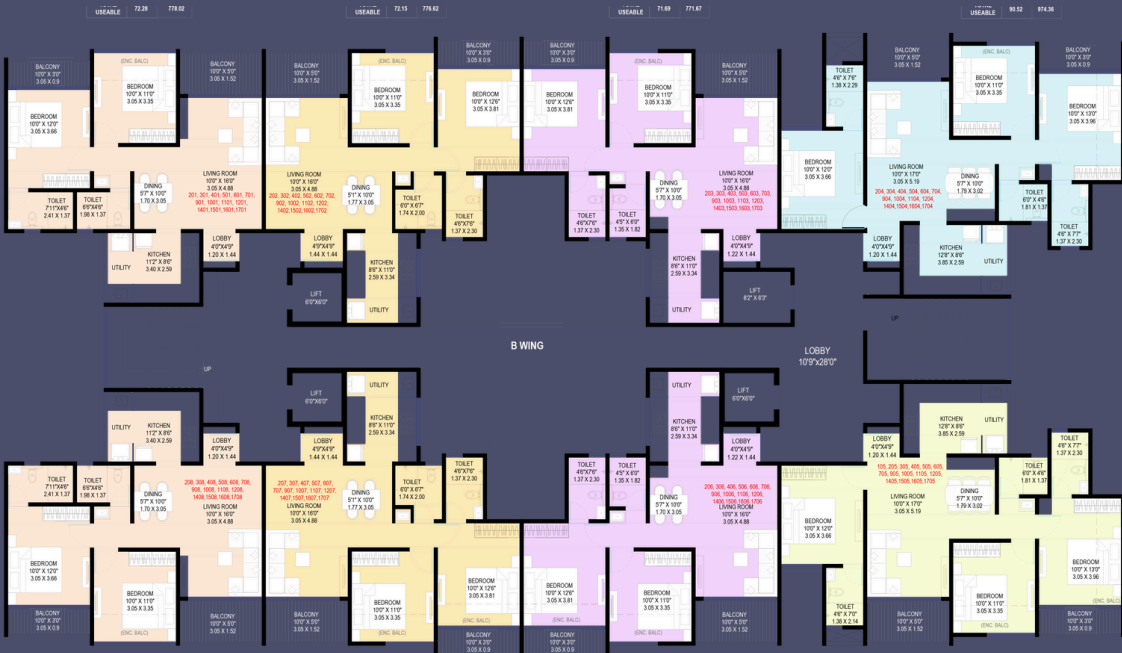
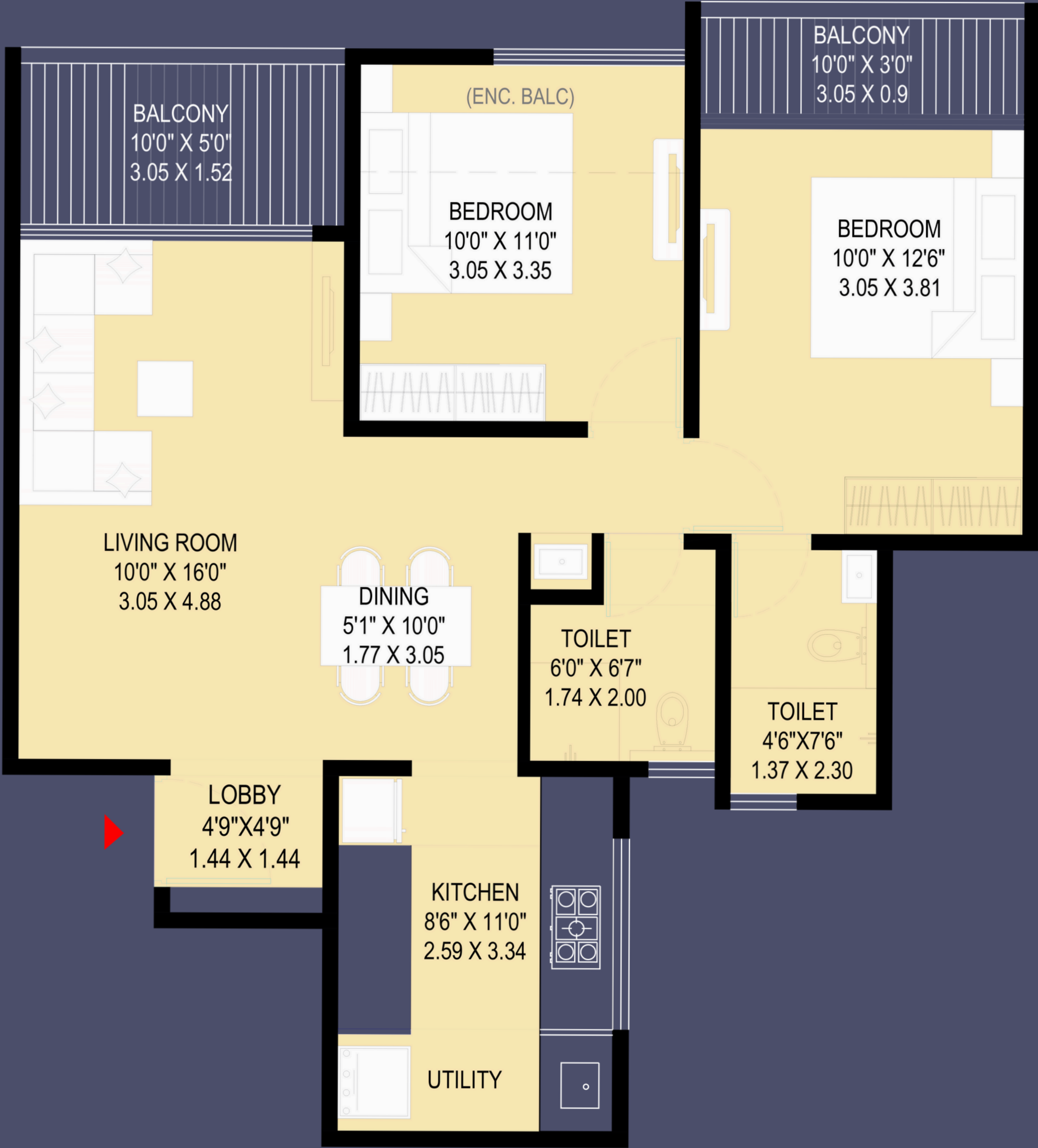


B WING
KEY PLAN

FLAT NO.S		
203, 303, 403, 503, 603, 703, 903, 1003, 1103, 1203, 1403, 1503, 1603, 1703		
2 BHK	SQ.MT.	SQ.FT.
CARPET	60.95	656.07
E. BAL.	3.38	36.38
OPEN BAL	7.36	79.22
DRY BAL	0.00	0.00
TOTAL USEABLE	71.69	771.67



2 BHK Unit Plan

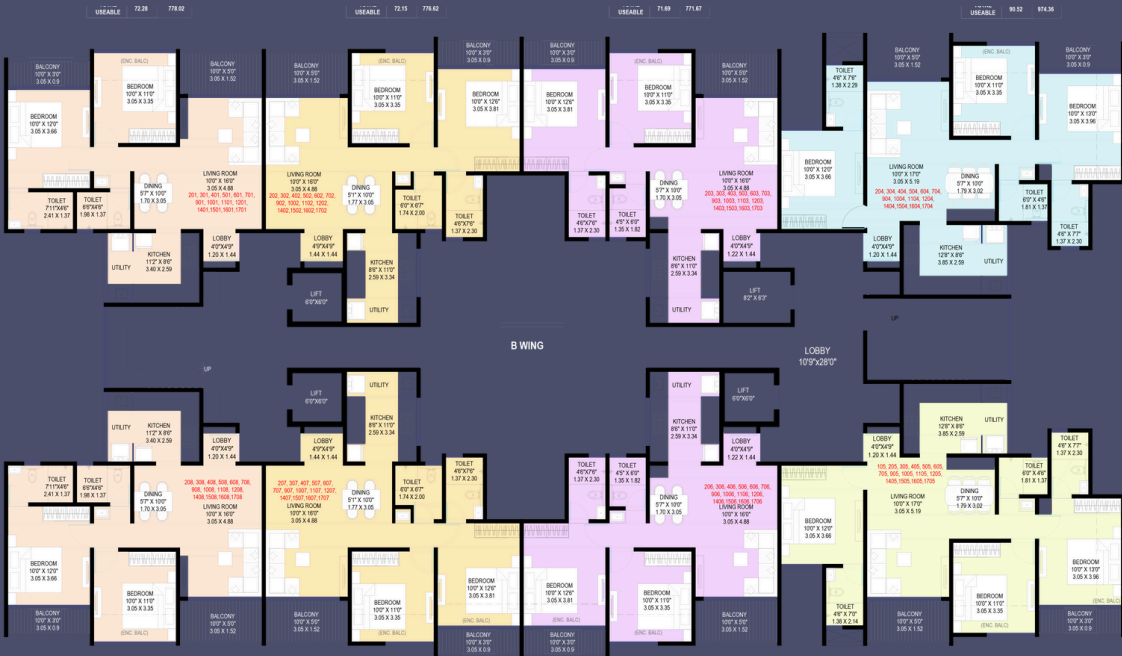


B WING
KEY PLAN

FLAT NO.S		
202, 302, 402, 502, 602, 702, 902, 1002, 1102, 1202, 1402, 1502, 1602, 1702		
2 BHK	SQ.MT.	SQ.FT.
CARPET	61.41	661.02
E. BAL.	3.38	36.38
OPEN BAL	7.36	79.22
DRY BAL	0.00	0.00
TOTAL USEABLE	72.15	776.62



2 BHK Unit Plan



B WING
KEY PLAN

FLAT NO.S		
201, 301, 401, 501, 601, 701, 901, 1001, 1101, 1201, 1401, 1501, 1601, 1701, 108, 208, 308, 408, 508, 608, 708, 908, 1008, 1108, 1208, 1408, 1508, 1608, 1708		
2 BHK	SQ.MT.	SQ.FT.
CARPET	61.54	662.42
E. BAL.	3.38	36.38
OPEN BAL	7.36	79.22
DRY BAL	0.00	0.00
TOTAL USEABLE	72.28	778.02



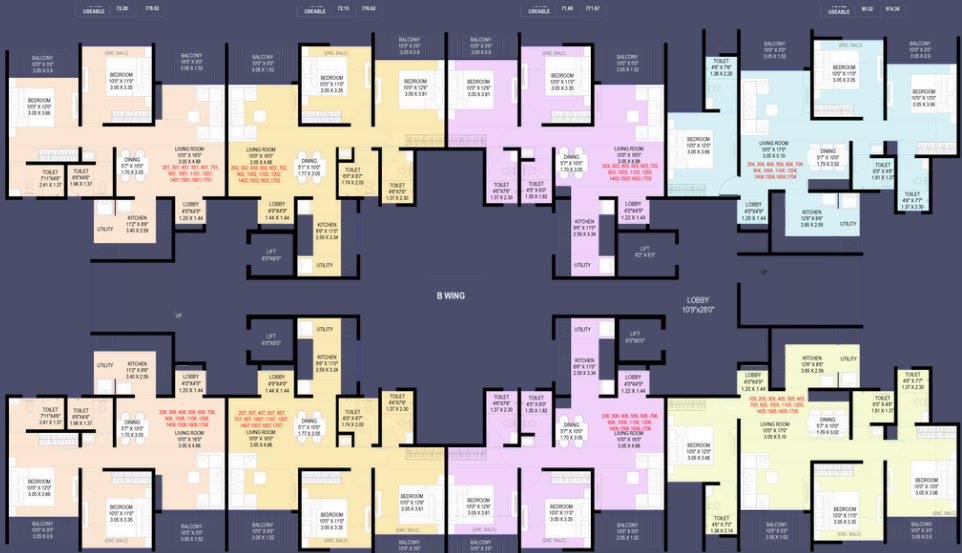
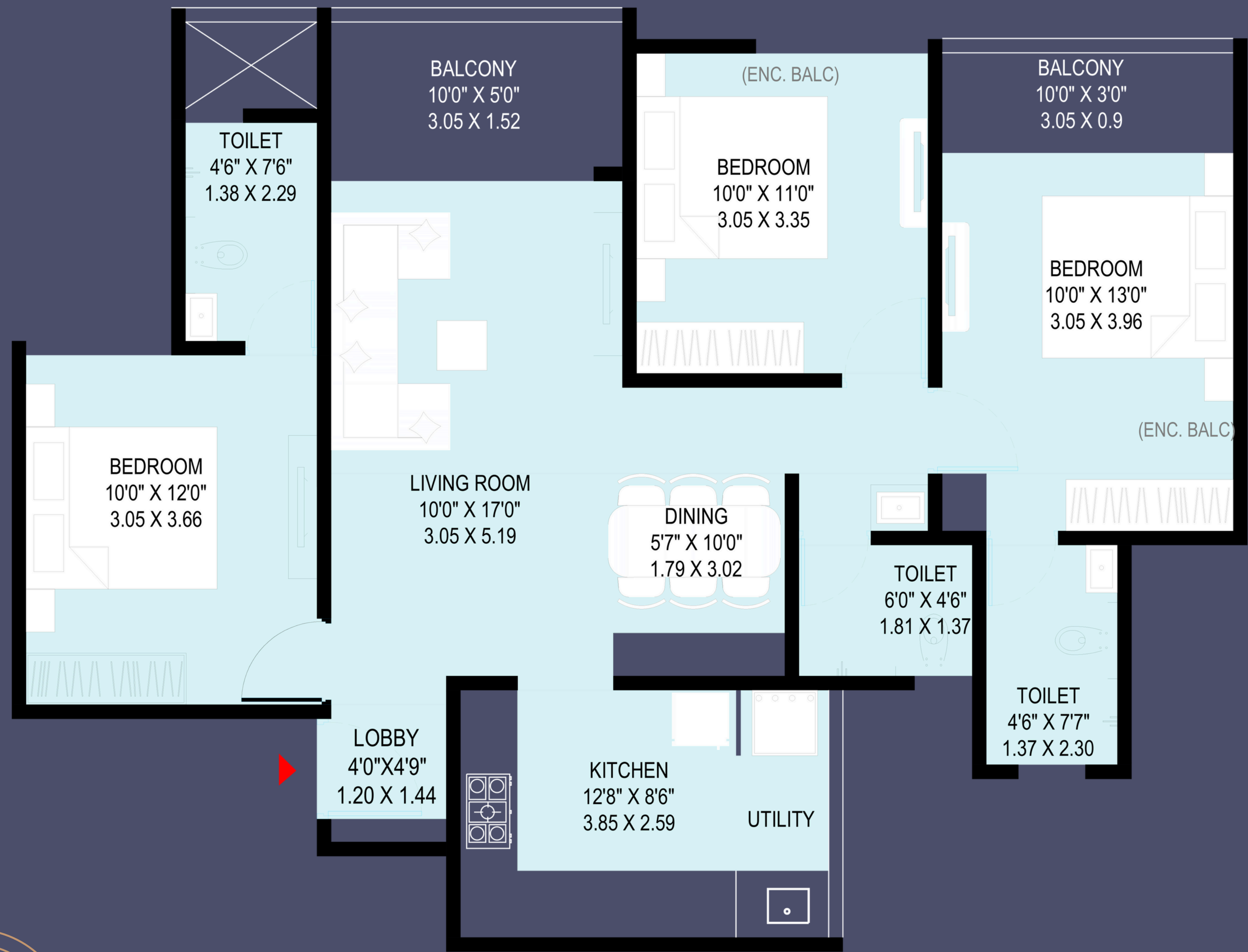
2 BHK Unit Plan



B WING



3 BHK Unit Plan



B WING
KEY PLAN

FLAT NO.S		
204, 304, 404, 504, 604, 704, 904, 1004, 1104, 1204, 1404, 1504, 1604, 1704		
2 BHK	SQ.MT.	SQ.FT.
CARPET	76.04	818.49
E. BAL.	7.12	76.64
OPEN BAL	7.36	79.22
DRY BAL	0.00	0.00
TOTAL USEABLE	90.52	974.36



3 BHK Unit Plan



B WING



*An ENCHANTING
world of refined living*



Specifications

Structure:

- Strong Earthquake resistant RCC framed structure.

Masonry work:

- 6"/5"/4" thick internal and external ACP block masonry walls.

Plaster:

- External sand-faced, sponge-finished plaster for increased protection from weathering and formations.
- Smooth POP/Gypsum finish for internal walls.

Windows:

- High-density powder-coated aluminum sliding windows with mosquito net & M.S. grills.
- Granite window frames.
- Clear 4/5 mm glass (ASAHI/MODI or equivalent brand)
- M.S. railing for terraces.

Kitchen:

- Granite kitchen platform with stainless steel sink.
- 600 x 1200 OR 600 x 300 mms digital wall tiles up to lintel level.
- Provision for exhaust fan.
- R.O. water purifier.

Toilets:

- 600x1200 mm OR 600x300 digital wall tiles in all toilets up to lintel level.
- Provision for exhaust fans.
- Provision for geysers.
- Hot and cold mixer unit in bathrooms.
- JAQUAR/GROHE /CERA or equivalent CP fittings.
- JAQUAR/RAK/CERA or equivalent sanitary ware.
- Concealed plumbing.

Doors & Frame Frames:

- Decorative main door with both sides laminated flush doors with laminated/ polished wooden door frames in living and bedrooms.
- Granite door frames in toilets and terraces with both side laminated waterproof doors.
- Good quality internal laminated flush doors with branded cylindrical locks.
- Sliding / French doors for Balcony attached to the living room

Electrification:

- Concealed copperwiring (ANCHOR/POLYCAB/FINOLEX or equivalent)
- TV and Telephone points in living rooms and bedrooms.
- LEGRAND/ L&T/SCHINDLER/ANCHOR or equivalent switches.
- Adequate electrical points in all rooms with MCB & ELCB.
- AC point in master bedroom AND Living Room
- Automatic switching system for water tanks.

Flooring:

- 600 x 1200 mm double charged and NANO polish vitrified tiled flooring in all rooms.
- 600 x 600 mm Rustic or equivalent finished Tiles in terraces and Balconies.
- 300 x 300 mm OR 600 x 600 Matte finished or equivalent finished antiskid tiled flooring in all toilets.

Painting:

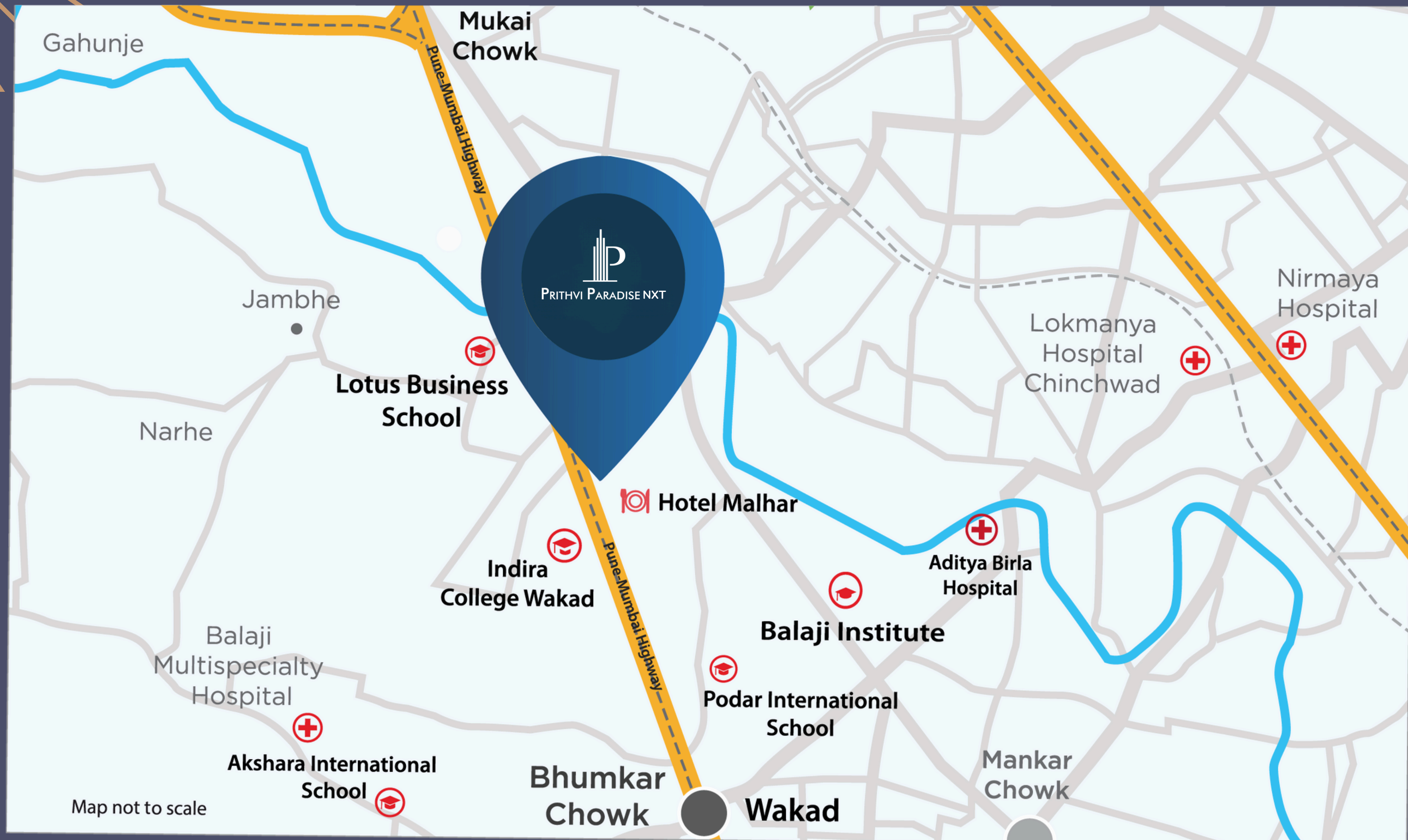
- Internal plastic emulsion paint (ASIAN / NEROLAC/or equivalent).
- External Acrylic or equivalent paint.



CONNECTING *you to*
the world SEAMLESSLY



Location Map



Hotel Sayaji
(4 km)

Sentosa Resort Park
(3.5 Km)

JSPM College
(650 M)

D. Y. Patil College B-school
(1 km)

Hinjewadi IT Park
(3.5 km)

Mumbai - Bangalore
Highway (0 km)



Building Dreams, Creating Legacies *About Prithvi Group*

Prithvi Group, a distinguished and highly trusted real estate group, is renowned for its exceptional homes and unparalleled customer service in Pune. Established in 2011, the company has built a sterling reputation for delivering high-quality homes with utmost transparency and on-time delivery over the past 12 years. With a vision to create futuristic homes, Prithvi Builders has always stood to its commitment & our happy clients is the best example for our delivered work. We have always focused on innovative technology & unique design concepts.



A PROJECT BY



📞 08956 401 906

🌐 *prithvigroup.in*



Site Address: Survey No. 130, Service Rd, Next to Prithvi Paradise, Jeevan Nagar, Tathawade, Pune, Pimpri-Chinchwad, Maharashtra, 411033

SCAN QR CODE



Banking Partner:



MAHARERA number: P52100066526 and is available on the website <https://maharera.mahaonline.gov.in>



STRATEGIC PARTNER
DREAM ASHIYANA
PROPERTIES